

Truro Cathedral

sacred space, common ground



*Introducing the new vision, ambition
values and aims of Truro Cathedral.*

Contents



Overview & Background

An introduction from The Dean	04-07
Our people	08-11
Our vision	12-13
Our ambition	14-15
Our aims	16-19
Our values	20-21
Introducing our Celtic cross	22-23

Our strategy

Worshipping life	26-27
Life-long learning	28-29
Social Responsibility	30-31
Visitor experience	32-33
Financial sustainability	34-35
Major projects	36-45
Conclusion	46-47

An introduction from The Dean

In its hundred plus years, I'm certain that our very special cathedral has witnessed many amazing events and, indeed, weathered its share of challenging times.



An introduction from The Dean

Truro Cathedral and its senior team have undergone many changes in the past five years. With several, myself included, assuming new roles and other long-standing faces leaving for pastures new, there have been lots of learning curves. Further to this, the changing social and economic landscape has afforded additional challenges in terms of defining and securing the future of the cathedral.



As its current custodians, it is our responsibility to nurture, maintain, protect and develop all that Truro Cathedral is and stands for within our community. A sacred place of worship. A fascinating place of learning. A home to one of the finest choirs. A place to gather with friends for a coffee. A place of staggering architecture. A place to visit when on holiday. A safe place. A calm place. A fun place. An honest place. An active place.

With so much change and so many priorities, we had to be sure we understood and agreed on the focus of our responsibility, and so, over the past 18 months, the cathedral team has been through a huge process to ultimately ask big, challenging questions of itself.

Who are we? What are we trying to do? Why are we trying to do it? And of course, how will we make it happen?

Finding the answers to these questions has been a long, difficult and thought-provoking journey that has led to the creation of our new cathedral vision, supported by a new ambition, values and five core aim. Our vision is to:

Create sacred space in which the holiness of God is encountered in an open and inclusive way and; common ground where issues shared by the whole of humanity can be explored

We have an incredible team of staff, volunteers and supporters that are all about to embark on a thrilling journey that will help Truro Cathedral shine even brighter and reach even further into our community with support, faith and love.

The pages that follow will, I hope, help you to understand more about our core vision. We outline how sacred space and common ground is realised in four key elements of our common life; worship, learning, social responsibility and visitor experience, as well as, of course, acknowledging that without financial sustainability none of this will be possible. We explain what sacred space and common ground mean to us, and how we will try and incorporate this in our daily life.

Our intention is to issue an update every year, focussing on specific activities that broaden our understanding of what sacred space and common ground are, reviewing the year that has passed and indicating plans for the future.

In conclusion, I, together with Chapter, resolutely believe that by being brave, trying new things, questioning others and working together, we really can achieve sacred space and common ground for all who experience Truro Cathedral.

The Very Reverend Roger Bush, Dean of Truro

Our people

Truro Cathedral was built by the people of Cornwall for all people – and so it is destined that people are, and always will be, the beating heart of our magnificent building. The very reason we exist and the key to unlocking an exciting future.



'People' is a generic term and so often talked about in numbers - 35 staff, 200+ volunteers, 49 choir members, 330+ congregational members, 30,000+ event attendees, 3,000+ student visitors, 70,000+ general visitors. The list goes on and on and its staggering that as a conservative estimate, in any one year, in one way or another, the cathedral engages around 150,000 people. That's not just a big number, it is a number that represents 150,000 individuals, each with their own unique reasons for wanting to experience and be part of Truro Cathedral.

Sometimes knowingly, sometimes not, every person that engages with the cathedral plays a part in enabling and continuing the life and work of this special place.

Our people

Throughout the process of asking ourselves the 'big' questions, the answer to 'why do we want to do xyz?' was 'People' - every single time. At the heart of our organisation, it is people that underpin all that we are and all that we do. It is people that will help us to continue to grow and develop for the future.



Our staff

Truro Cathedral is a busy place, and regularly provides over 120 services, events, learning activities and tours each and every month.

Behind every worship, learning and recreational activity is a small but highly motivated staff team, committed to working together to help achieve the cathedral's aims and ambition, whilst living by the values we seek to promote. Their continued hard work and creativity is valued by the cathedral beyond measure and we strive to ensure our staff team are cared for, appreciated and given opportunities to continually develop and grow.

Our volunteers

One of the greatest gifts you can give is your time. It's a statement of fact that without the unfailing support of our volunteers, and their willingness to continually give the cathedral this, we would simply cease to be able to do all that we do. Whether stewarding a concert, being a chaplain for a day, singing in the voluntary choir, serving at a sung eucharist, arranging the spectacular flower displays, prepping children's craft activities, counting collections, ringing the bells, operating the cameras, repairing cassocks, helping shop customers or stuffing envelopes to name but a few - the list of tasks our volunteers willingly help us as an organisation to undertake is staggering. So, from the cathedral team, we would like to say a heartfelt 'thank you' to our volunteers for everything they continue to do to support our day-to-day running, and helping visitors to enjoy a positive and meaningful experience of this special place.

Our congregations

Our worship places God at the centre of our lives. We strive to enhance our engagement with God, not only in our services, but also in praying together, studying together and in our fellowship and socialising. Throughout the week, our regular worshipping congregations come together to actively participate in, share and support each other in their journeys of faith, whilst collectively supporting the cathedral's mission.

Our supporters

The costs of running and maintaining such a wonderful building are high and increasingly significant. As an independent self-funded organisation, Truro Cathedral relies on donations and simply would not exist without the plethora of its kind and generous supporters. This support ranges from; casual visitors dropping change into the donation box, lighting a candle, enjoying a coffee in the restaurant, purchasing a gift in the shop, attending ticketed events or activities, or making a planned, regular donation. Truro Cathedral could not exist without such vital support.

The Friends of Truro Cathedral play a major part in bringing some of our local supporters together and enveloping them in fellowship and social activities. Our staff team strive to ensure our wider supporters remain informed about the difference their support is making and regularly update them about cathedral life.

We are continually grateful for each and every person that plays a part - it is this support that ultimately enables Truro Cathedral to be both a sacred space and common ground for all.

OUR VISION

Our vision for Truro Cathedral is to create sacred space in which the holiness of God is encountered in an open and inclusive way and; common ground where issues shared by the whole of humanity can be explored.



Our vision is our organisation's guiding star - the thing which simultaneously roots and drives all of the activities that we undertake. As outlined in the previous couple of pages, for us, the element at the very heart of our vision is people. Throughout the process that has brought us to this point, we kept returning to this cornerstone: We care for people, we want to share our faith and values with people, we want to listen and learn from people and ultimately want to continually develop our relationships with them and theirs with us, themselves and God.

We believe that the whole of creation echoes the holiness of God, but that certain places focus that holiness in special ways. We believe that Truro Cathedral is one such place, a place of prayer and worship, a place of stillness and response before God. Sacred space indeed.

The whole of humanity is a blessing and a joy and we want Truro Cathedral to be a place where everyone is welcome, regardless of colour or creed, a place where people can come together. A place of common ground.

Sacred space and common ground, is about working to ensure Truro Cathedral is a safe, supportive, holy place that actively and warmly welcomes, engages, develops, supports and extends God's love to all in our community.

Our ambition

Inspired by the Gospel of Jesus Christ, we work to build a welcoming, inclusive and engaging environment that, through the delivery of a diverse and inspiring programme of worship, events, educational activities and community outreach, fulfils and spiritually enriches all who experience Truro Cathedral.



Since construction began on Truro Cathedral in 1880 it has proven to be a very special place, filled with prayer and worship, heritage and history, treasures and inspiration. Built by the people of Cornwall for everyone to experience and enjoy, today our cathedral continues to play an important role in our modern lives.

For many, the cathedral is a place of worship, whether as part of a congregation or individually for quiet prayer or reflection. For others it's a great place to visit for events that interest them throughout the year. Learning opportunities abound for some, whilst friendship and fellowship are found inside the doors for others – be that through meeting friends for a regular coffee, or perhaps as part of our amazing volunteer team.

Our ambition serves to state our purpose and speak to the approach by which we will achieve our vision. So for us, this underlines our commitment to encourage and enable engagement with the cathedral, its team, and God, ultimately prompting reflection and response from all people experiencing Truro Cathedral, whatever the purpose behind their visit.

Our aims

Our vision tells us where we are headed. Our ambition reminds us of our purpose and the approach we want to take. Our aims then, provide a set of overarching goals that help us to convert our vision and ambition into action.



Our aims

We have identified five core aims for the cathedral, each focusing on a different aspect of our life and work. We explore each aim in greater depth later in this document, but the overarching aims are:



Develop and broaden our *worshipping life* to offer sacred space for everyone to experience God.



Enable and encourage *life-long learning*, personal growth and development, exploring the relevance of Christianity to everyday life through education, theology and the arts.



Develop and broaden our *social responsibility* by identifying areas of common concern and interest within our communities, and providing a place where these can be explored and supported in a positive and safe environment.



Enrich our *visitor experience* by developing meaningful ways for individuals and groups to engage with the cathedral building, its ethos, integrity and values.



Foster *financial sustainability* and accountability by growing our resources.

OUR VALUES

Our values are perhaps best explained as the philosophies or principles that guide our behaviour with one another and our relationship with the outside world.



Our values help to clarify exactly what Truro Cathedral is striving to be in terms of culture and ethos and serve to remind us all about what is important – making sure these qualities do not get lost in the midst of daily activities or in pursuit of our vision.

Holding true to these values, these behaviours, in everything we do is of the highest importance to the organisation. Why? Once again we return to the fact that people are the beating heart of Truro Cathedral.

We are privileged to have not only a first-class staff team comprising experienced professionals that work above and beyond on a daily basis, but also an incredible team of 200+ volunteers that freely give their time, efforts and expertise to help ensure the smooth running of the cathedral. Without either of these teams, we simply couldn't undertake everything we do today, nor could we hope to achieve our plans for the future.

"So encourage each other and build each other up."

1 Thessalonians 5:11

Love & Unity

We care for one another with compassion and kindness and our work is embedded in a spirit of love and cooperation as we come together to succeed in our mission for the cathedral.

Dignity & Respect

We respect others and value diversity, embracing our similarities and differences with gentleness, self-control and a willingness to learn. We welcome expressions of spirituality, respecting and valuing those with different faiths or no faith.

Accountability & Integrity

We act with honesty, openness and integrity in everything we do. We use the resources entrusted to us wisely and effectively with transparency and accountability. We demand high standards of professionalism from ourselves every day, always striving to deliver excellence in our work.

Creativity & Courage

We are bold and challenge ourselves and others to question the norm. We explore new options and take intelligent risks, confident that we do so in a supportive environment. Committed to continual development, we embrace change and nurture personal growth.

Introducing our Celtic Cross

The Celtic Cross is our way of explaining our new vision, ambition, values and aims in one simple, visual representation. As Cornwall's only cathedral, perhaps there could be no better symbol for this than the Celtic cross, implicitly symbolic of our roots in both the Christian faith and in this beautiful part of the world.

The core structure of any cross are the two intersecting lines. They are, in essence, the foundation of our cross. Considering Truro Cathedral the organisation as the bottom pillar of the cross – the reason for all other parts to exist – you will see that our vision sits in the top pillar as our guiding star, with our ambition and values located in the other two intersecting pillar locations. These four elements therefore collectively represent the foundation of our cross and the foundation of our organisation.

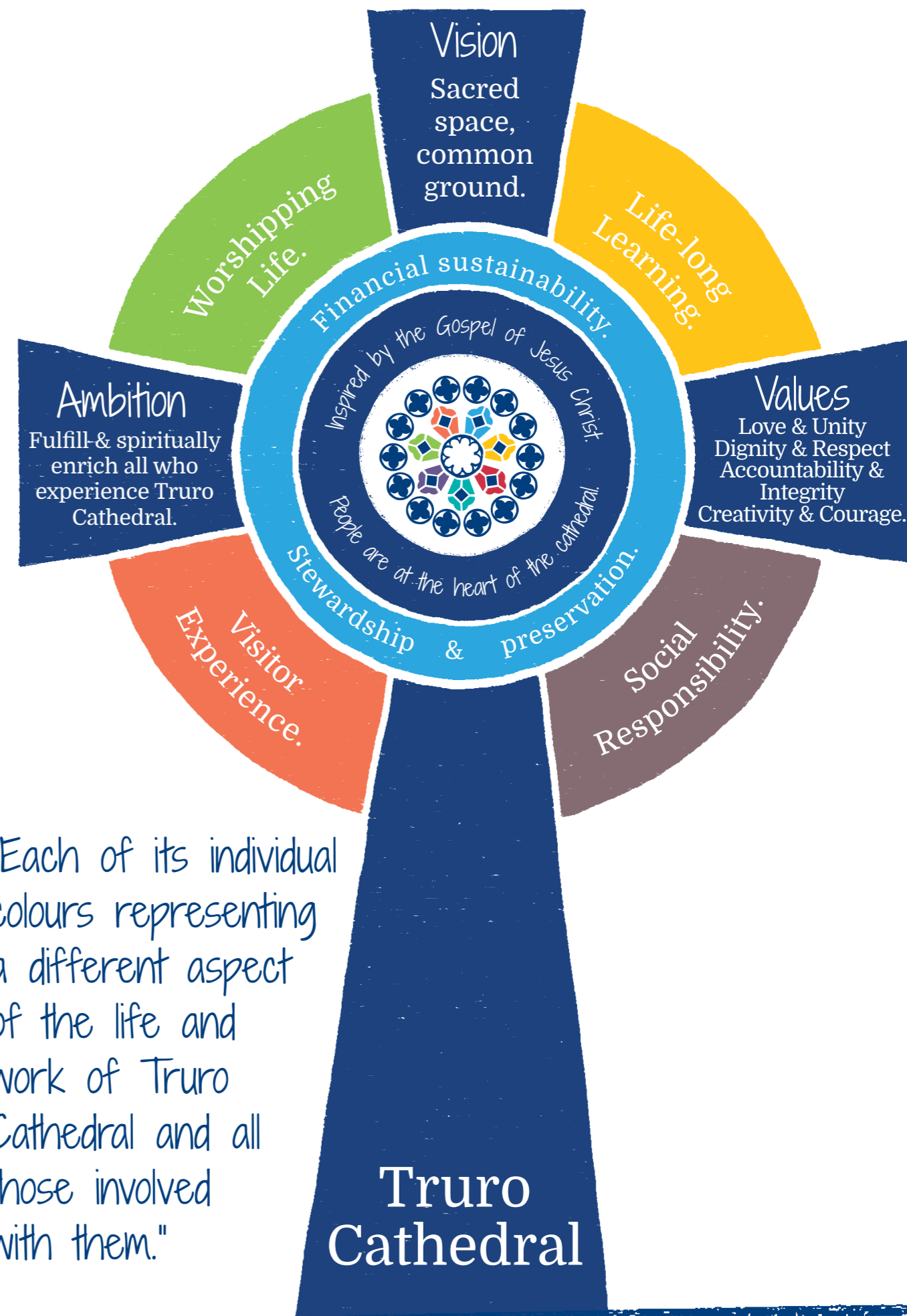
At the very centre is the cathedral's rose window taken from our new logo - each of its individual colours representing a different aspect of the life and work of Truro Cathedral and all those involved with them.

Immediately encircling this are the two statements that underpin everything we do – our focus on all people, whether staff, volunteer, congregation or visitor, being at our very heart; and the fact that all of our work, from the day-to-day activities to the huge undertakings of renovation projects, from the tiniest unseen gesture to the wide public statements, is inspired by the Gospel of Jesus Christ. You will see this is shaded in the same blue as the core intersecting lines of the cross, again to underline the central nature to the cathedral.

Financial sustainability, together with stewardship and preservation, form the next circle, indicating this aim's intrinsic nature to enabling all other activities and plans to happen.

Finally, the outer circle is split into four quarters, each representing one of the remaining four aims and all of the activities that these represent.

Not one element of the Celtic cross could stand alone, similarly not one element of our vision, ambition, values or aims, nor the plan these elements support, could exist in isolation.



"Each of its individual colours representing a different aspect of the life and work of Truro Cathedral and all those involved with them."

Our strategy



Develop and broaden our worshipping life to offer sacred space for everyone to experience God.



It may seem an obvious statement that, as a Christian place of worship, our organisational plan places a central focus on wanting to encourage and grow our worship. But perhaps the part to focus on here is that we want 'everyone to experience God'.

As we have said, people are absolutely at the heart of the cathedral and we want to ensure that our worshipping life offers meaning and purpose to all who experience it. Whether attending a service, lighting a candle, listening to the choir rehearse or simply just 'being' in the cathedral for quiet reflection, we want to ensure that spiritual needs are fulfilled, identity and relationships explored, diversity embraced and growth encouraged.

Why? Because we want all who participate, whether individually or collectively, to experience God. We believe we can achieve this by working towards a number of identified objectives.

Long term objectives:

Embrace the world through worship so everyone may sense something of the presence of God...

This will include:

- Continuing to provide regular worship opportunities, such as daily services, Evensong and Sunday services, that are welcoming and open to all. This also includes the cathedral's distinctive worship through music by maintaining the Anglican Choral Tradition through the support and development of Truro Cathedral Choir.
- Encouraging more people to celebrate personal rites of passage at the cathedral, such as baptism, marriage and confirmation.
- Enhancing access to and experiences of personal, interactive worship, such as candle lighting or requesting prayers.
- Finding ways to make worship options and formats easier to understand and participate in for those new to or less experienced in worship.
- Finding ways for worship experiences to be enhanced. For example, through improved sound or screen options.

Increase the number of people experiencing worship...

This will include:

- Finding ways to inspire and encourage new people to try worship – be that by attending an existing service such as Evensong or by developing new worship options for new congregations.
- Exploring ways to link wider social involvement with worship – for example by holding more special services relating to social causes/issues.
- Exploring additional ways to take worship into the community through increased outreach activities.
- Developing improved communication channels for and with those attending and interested in attending worship.
- Developing an online facility to reach a wider audience with aspects of our worshipping life. For example, by providing access to audio recordings of sermons.

Life-long Learning

Enable and encourage life-long learning, personal growth and development, exploring the relevance of Christianity to everyday life through education, theology and the arts.



We want to be proactive in helping anyone and everyone that experiences the cathedral, to grow and develop their understanding of themselves, of where they want to be in life, and of the vital role they play in the wider world and community.

We want to encourage all people, regardless of age or faith, to have the courage and ability to ask and explore big questions. It is our responsibility to provide an accessible environment and varied opportunities to enable these questions to be asked and to provide easy, direct access to the knowledge and support people require in helping to find big answers. At our absolute core is our desire to promote the Christian faith and its values, and provoke thought and reflection on the relevance of that faith and the application of its values to our daily lives. We want to do this because people are at the heart of the cathedral – a people loved by God.

Long term objectives:

Become an educational and theological centre of excellence...

This will include:

- Continuing our formal youth education work via the provision and development of our schools and college programme, aligning with core elements of the National Curriculum in order to become more widely recognised as a valued resource for schools and other educational groups across the county.
- Continuing and expanding our adult education work, in conjunction with the Diocese of Truro, via the provision and development of adult theological training programmes.
- Enhancing the spiritual support and learning provided to staff, volunteers and others directly linked with the cathedral.
- Reviewing the existing spaces used for education to ensure the environments are as positive and conducive to learning as possible.

Satisfy curiosity and people's search for meaning and enable thoughts to be turned into action...

This will include:

- Working to ensure everyone who experiences the cathedral in any way is able to understand that experience. Whether attending a service, event, or simply having a wander around, we want to ensure the right information is available to interpret that experience, be it from an educational, theological or practical perspective. By doing so, we hope to enrich those experiences and, in some cases, prompt further consideration and contemplation.
- Reviewing, developing and enhancing the pathways and support options open to any and all people wanting to know more.

Social Responsibility

Develop and broaden our social responsibility by identifying areas of common concern and interest within our communities, and providing a place where these can be explored and supported in a positive and safe environment.



Built by the people of Cornwall for all people, Truro Cathedral has, and remains a focal point for the communities it serves. 'Social Responsibility' represents our absolute commitment to understand, interact and, where appropriate, provide support and advocacy to groups in our communities that represent current social themes and interest within a non-judgemental, inclusive environment.

We want to be bold in breaking down barriers and become widely recognised as a place in which issues can be explored, challenged and supported. We want to grow our understanding of current issues, challenge the status-quo and ask difficult questions of ourselves and others. If we can do this, we will become a catalyst for real change – somewhere that can start conversations, enable debate and break down barriers reflecting God's love for the world. We will help to effect the action and change that makes a difference in the lives of communities, becoming an agent of reconciliation and a known, perhaps more widely valued resource by all the communities we serve.

Long term objectives:

Become recognised as a place where issues of justice and reconciliation are discussed and explored...

This will include:

- Researching, scoping and creating a specific, long-term Social Responsibility plan that defines and outlines the exact role(s) the cathedral will undertake in this context, identifying key partners in researching and scoping areas of social justice, and implementing action where required and necessary to foster change in attitudes and behaviour.
- Gathering feedback from all existing community group visitors, exploring ways the cathedral can enhance the role it plays in supporting and engaging them.

Increase engagement with recreational interest and social cause groups...

This will include:

- Proactively selecting at least one social topic to focus on each year, enabling more time, provision, support and focus to be given to raise awareness and education of these areas.
- Undertaking proactive work with groups linked to the identified topics to establish relationships, engage new groups and show support to outside agencies.
- Providing new physical spaces in and around the cathedral that can be used by existing and new groups for the duration of the project.

Operate in an environmentally responsible manner...

This will include:

- Reviewing the cathedral's existing carbon footprint and working to embed a culture of consideration and commitment to do everything possible to reduce the impact of the cathedral and its associated activities on the environment.

Visitor Experience

Enrich our visitor experience by developing meaningful ways for individuals and groups to engage with the cathedral building, its ethos, integrity and values.



We want anyone and everyone that experiences the cathedral in any way, to leave the experience with more than they came to it with – be that emotionally, spiritually, intellectually or physically. Enabling visitors to have reciprocal interactions and encounters with the building, our people, events, activities, services, themselves and, of course, God, underpins everything we are about.

We want to share our faith and values. We want to listen, learn and continually develop. We want to grow visitor numbers and loyalty across all areas. We want people to enjoy and talk about the cathedral positively and we want to encourage financial support. By investing time and resources in ensuring we understand what visitors are looking for and providing access to those experiences will only lead to a positive and fulfilling outcome for all.

Long term objectives:

Become a 'must visit' location...

This will include:

- Making it easier for visitors to understand the cathedral and its mission with improved interpretation and communication.
- Exploring the ways the building can be improved to enhance visitor experience, and progressing priority areas (eg disabled access, improved seating).
- Undertaking a brand review and refresh to ensure the way the cathedral is positioned reflects our long terms goals and vision.
- Continuing to provide a brave and varied programme of events and services.
- Continuing to protect and maintain the building to ensure it is preserved for generations to come.

Increase visitor numbers...

This will include:

- Setting up systems for detailed visitor number monitoring.
- Developing and enhancing the cathedral's systems to enable previous and potential visitors to be contacted based on interest preferences.
- Developing improved links with other local organisations and attractions to explore options for combined offerings.

Inspire greater support from visitors...

This will include:

- Reviewing all of the cathedral's existing routes to support and revamping them to make them more relevant and engaging.
- Finding ways to communicate how visitors can support the cathedral and what their support can help to achieve.

Financial Sustainability

Foster financial sustainability and accountability by growing our resources.



We are the guardians of the cathedral and cherish its heritage and traditions. We protect, conserve and develop the beauty of the building, its history, fabric and contents. The financial challenges are steep though, with costs of £1.3m per year just to keep the building running, and all capital projects, such as the roof repairs at £3.2m, on top of this.

As an independent self-funded organisation that relies on donations, like many other cathedrals and not-for-profit organisations, the current financial environment is particularly challenging. But through stewardship, education and the achievement of the objectives outlined, we will continue to nurture, develop and look after all of the cathedral's assets in an ethical, transparent and responsible manner that will enable the cathedral to grow its income, reach, scope and resources. We want to always inspire confidence and continued support in our ability to achieve our vision and want to develop our employees and volunteers to enable them to help turn our ambitions into reality.

Long term objectives:

Build and uphold an organisation that can deliver the Vision

This will include:

- Ensuring our staffing structure is the right shape and fit to support all we want to achieve.
- Planning for, and achieve, balanced budgets across the organisation.
- Nurturing a culture of implicit understanding of the organisations goals, and working to support all staff and volunteers in understanding how their efforts contribute.

Be recognised as an outstanding employer...

This will include:

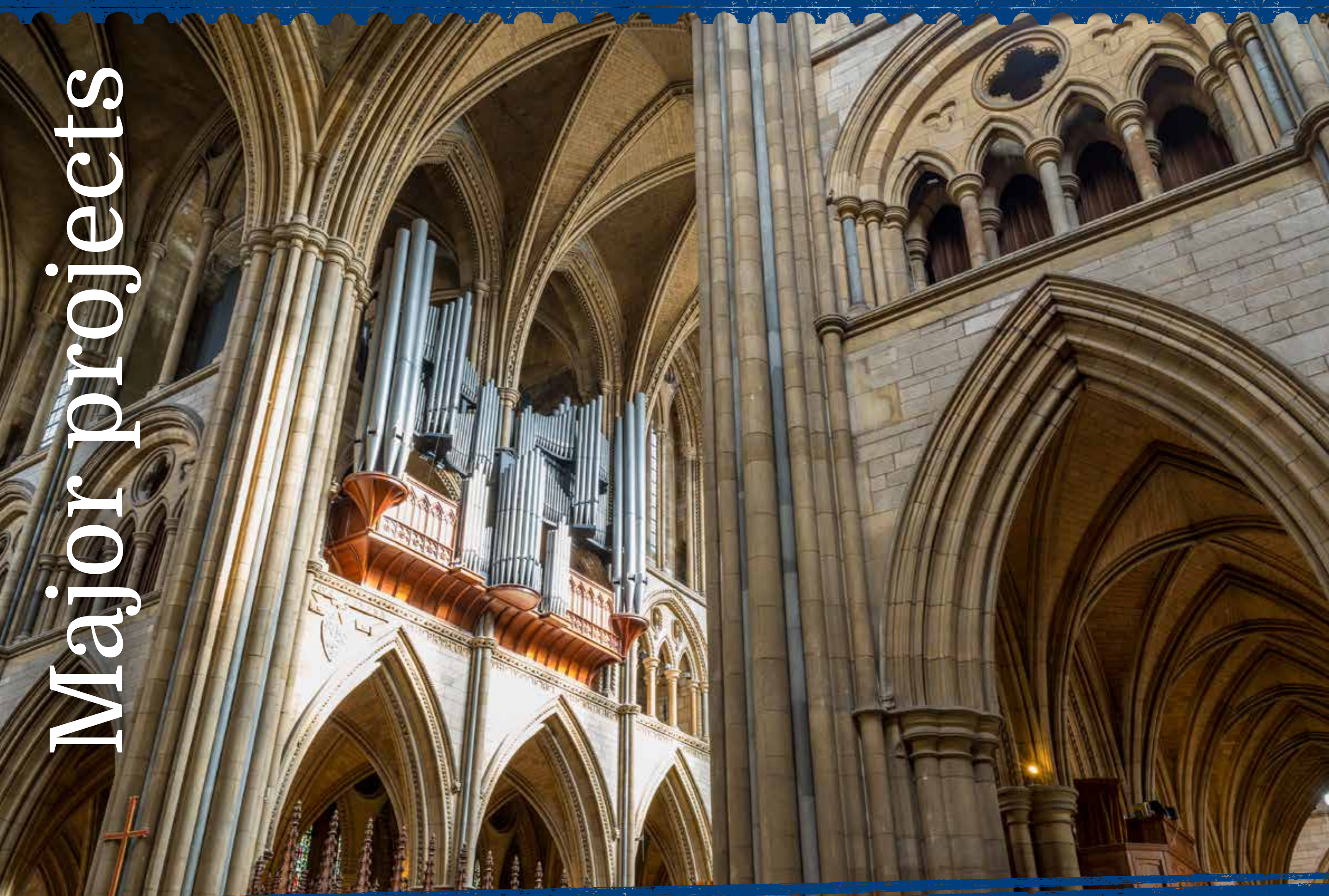
- Continuing to adapt, create and enhance a full suite of employee and volunteer resources and processes that are formed around the core of our Vision, Ambition, Values and Aims.
- Creating long-term training plans for employees and volunteers to provide the best developmental support possible.
- Creating a pleasant and enabling work environment with access to current tools and research.
- Improving staff and volunteer communications to better listen, understand, share and connect individual contributions with wider ambitions.

Increase the cathedral's daily income...

This will include:

- Embedding a culture of fundraising across the organisation, with consistent consideration given to the not-for-profit nature of the cathedral.
- Continuing to improve and enhance the cathedral's information management systems to provide the best possible insight and analysis.
- Enhancing processes and procedures relating to spending, calculating anticipated returns and post-activity evaluations.
- Investing in sources of income with greater predictability and regularity.
- Developing and increasing the giving routes open to people, making it as easy as possible for people to support the cathedral in their preferred way.
- Improving supporter contact and communications – we wouldn't be able to do what we do without the generosity of our supporters, and we want to be sure each one understands the crucial contribution they are making.
- Partnering more closely with the Friends of Truro Cathedral to support various fundraising activities.

Major projects



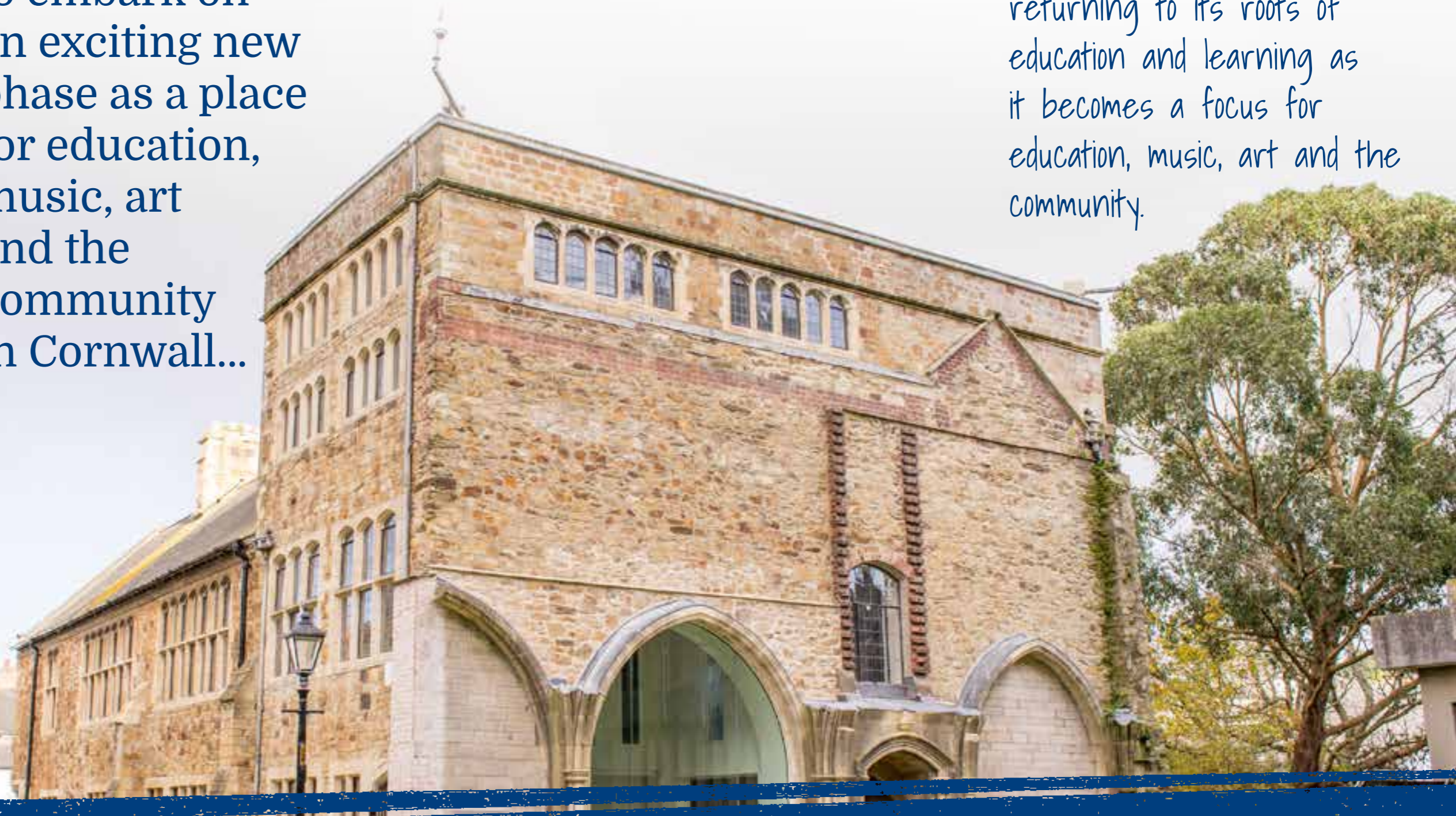
Old Cathedral School

Following the completion of extensive renovation works, the Old Cathedral School is about to embark on an exciting new phase as a place for education, music, art and the community in Cornwall...



Situated on Cathedral Green, the Old Cathedral School has an incredible history that dates back to 1549 when it was first used as a Church of England school for boys in Truro. Following the completion of Truro Cathedral, it held responsibility for educating the Choristers and hence became known as the Cathedral School. The school was closed in 1982 and turned into office space for a number of years before the building fell into significant disrepair.

Major fundraising efforts enabled the restoration work to be undertaken and, following its recent completion, we are thrilled that from 2018, the Old Cathedral School will be returning to its roots of education and learning as it becomes a focus for education, music, art and the community.



Old Cathedral School

The £1.5m project has enabled the careful restoration of so many of the building's beautiful and unique aspects:



The beautiful Assembly Hall, which will provide an incredible space for performances, exhibitions, talks, or even dinners.



The original fireplaces, which have all been lovingly returned to their former glory, providing stunning focus points for the rooms and a link to the past.



The original mullioned leaded glass windows have all been painstakingly refurbished, including a stunning WWI commemorative window in the Assembly Hall. Additionally, for the first time in many years, we have been able to place on display some stunning stained glass panels created by the Reverend William Willimott, a local Cornish rector and notable Victorian stained glass craftsman.



The formidable glass arch which provides a huge window both into and out of the building, inviting the outside in and the inside out!

In addition to the Assembly Hall, a number of dedicated learning rooms have been created, along with other separate office areas available for hire by arts and educational organisations and businesses.

A small coffee bar is located at the front of the building and will not only serve to refresh those using the building, but also those passing, enabling people to convene and relax and enjoy the peace that Cathedral Green can offer.

Lastly, the ground floor of the Old Cathedral School will become the new Cathedral Office. Many factors have driven the decision to relocate the team to the newly renovated building, not least the opportunity it affords to bring the whole team together in one, large open-plan environment. Enabling better ways of working is a core focus for realising all of the goals laid out in this plan, and the chance to bring everyone together in this way at the start of our journey is one that could not be passed up.

This incredible and important building has been given a new lease of life thanks, in no small part, to the kindness and generosity of the cathedral's supporters. With a planned programme of community events, lectures, concerts, performances, exhibitions and fun activities, this once derelict building is not only going to help us as an organisation to achieve many of our aims, but in doing so, it is once again going to be a thriving hub for music, art and learning for all, right at the centre of our community.

OUR ROOF

We're halfway through our five-year Roof Appeal and, so far, have raised just over £1.4m and completed the first two phases of the physical repairs. But there's still lots more to do...

Our cathedral's existing roof has been in place since the nave was first slated between 1885 and 1908... that's anything from 107 to 130 years! Over that time, the weather has taken its toll and the roof and original slates have deteriorated to the point they all need replacing. It will take, in total, five years and £3.2 million to complete the roof works required to protect our cathedral.

In October 2014 and November 2016, the cathedral received two government grants of £500,000 each and since the public launch of the Roof Appeal in July 2015, over £400,000 has been kindly donated. This brings the current total to £1.4m and leaves just over £1.7m to raise.

July 2016 marked the completion of Phase 1 of the physical works - the re-slating of the High Level Western Arm which saw the replacement of almost 22,000 slates. Due to the work and fundraising both progressing well, we were also able to make use of the scaffold and incorporate the replacement of the slates on the North Aisle too - ultimately saving money. The original slates removed from the roof were salvaged at a rate of about 20%, and we were able to sell some on for use on other specialist projects, raising approximately £10,000.00 towards the appeal.

Phase 2 completed in January 2018 and saw all 8,230 slates on the South Aisle Western Arm, the Baptistry and South West Porch replaced. A significant milestone as this marks the completion of the whole of the roof of the Western side of the cathedral.

The planned third and final phase will replace all slates on the Eastern Arm of the Cathedral. It is hoped that all physical works will complete in 2020, but this is, of course, fully dependent on securing the funds needed.

Our Roof

Our fundraising for this important capital project continues to comprise many different elements.

Perhaps the most widely known is, of course, 'Sign-A-Slate', which provides the opportunity for visitors to sign their name or write a message on the back of one of the new slates being used on the roof, with the option to make a donation alongside this. Almost 5,000 people have now taken part in Sign-A-Slate, with linked donations contributing an incredible £230,000 towards the appeal. Though we believed people would like the chance to participate in the project in this way, it would also be fair to say that many of us underestimated the potential of Sign-A-Slate to not just help us inspire donations, but to also emotionally and spiritually help many of those taking part. People have been moved to participate for so many reasons, anything from celebrating a good day out or birth of a new baby, to anniversaries, weddings and, of course, as a way of remembering loved ones passed. It brings us right back to the fact that Truro Cathedral was built by the people of Cornwall for all people and will always have those people at its core – even when repairing the roof!



As our fundraising continues, we once again extend sincere thanks to all that have supported the appeal – the donations received have and continue to not merely contribute to a slate on a roof, but have helped to sustain the work and life of Truro Cathedral and all the communities it serves for years to come.



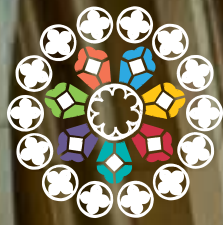
CONCLUSION

The creation of our Vision, Ambition, Values and Aims marks just the start of our ambitious journey - we must now work to turn them into our reality.



Over the coming months, projects and activities will be prioritised and each year we will issue an update on our plan, reviewing activities undertaken, reassessing our new position and priorities and committing to specific actions for the following 12 months.

May God bless the cathedral and grant us guidance as we strive to realise these plans and, in doing so, create sacred space and common ground for all experiencing this special place.



www.trurocathedral.org.uk

